

AKALA





THE SKY TERRACE 6 BEDROOM PENTHOUSE

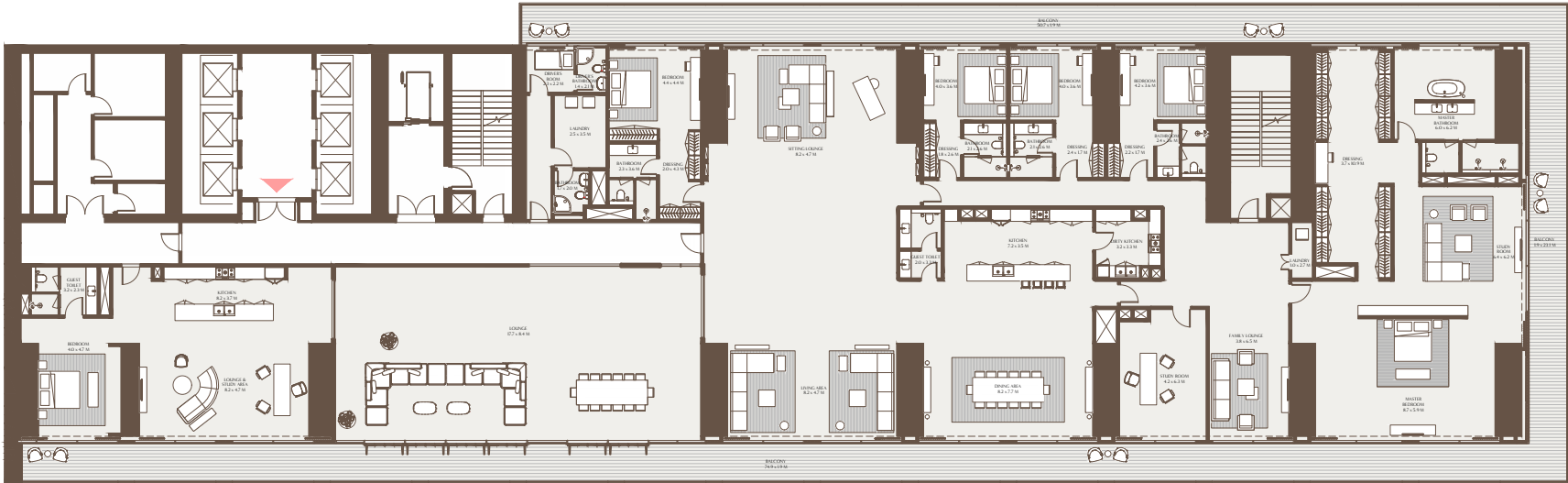
The Sky Terrace Penthouse 6 bedroom is a statement of refined grandeur, designed for those who seek space, privacy, and an uninterrupted connection to the city skyline.

Overlooking the Burj Khalifa, this expansive residence features flowing living and dining spaces, a family lounge, and an innovative open and light-filled space that blends indoor and outdoor living through seamless transitions. Four of the bedrooms are luxurious master suites, each with its own en-suite bathroom, while the primary master suite includes a 'his and hers' walk-in closet and spa-style bathroom with both shower and bathtub.

A sixth bedroom is part of a self-contained guest suite, complete with lounge, kitchenette, study area, and private bathroom.

The Sky Terrace - 6 Bedroom Penthouse A

Unit Area: 1,084.97 Sqm (11,678.52 Sqft) | Balcony Area: 274.05 Sqm (2,949.88 Sqft) | Total Area: 1,359.02 Sqm (14,628.40 Sqft)



50TH FLOOR



1-Measurements are indicative 'finish to finish' in Metric & Imperial excluding construction tolerance. 2-Plot/unit dimensions may vary from brochure, and unit types/plans may exist as mirrored versions; 3-All images used are for illustrative purposes only. 4-Unless stated otherwise, all fittings and interior decorative items shown are for illustrative purposes only. 5-The developer reserves the right to make alterations, at its absolute discretion, without any liability whatsoever up to the final 'as built' status.





THE OBSERVATORY 6 BEDROOM PRESIDENTIAL SUITE

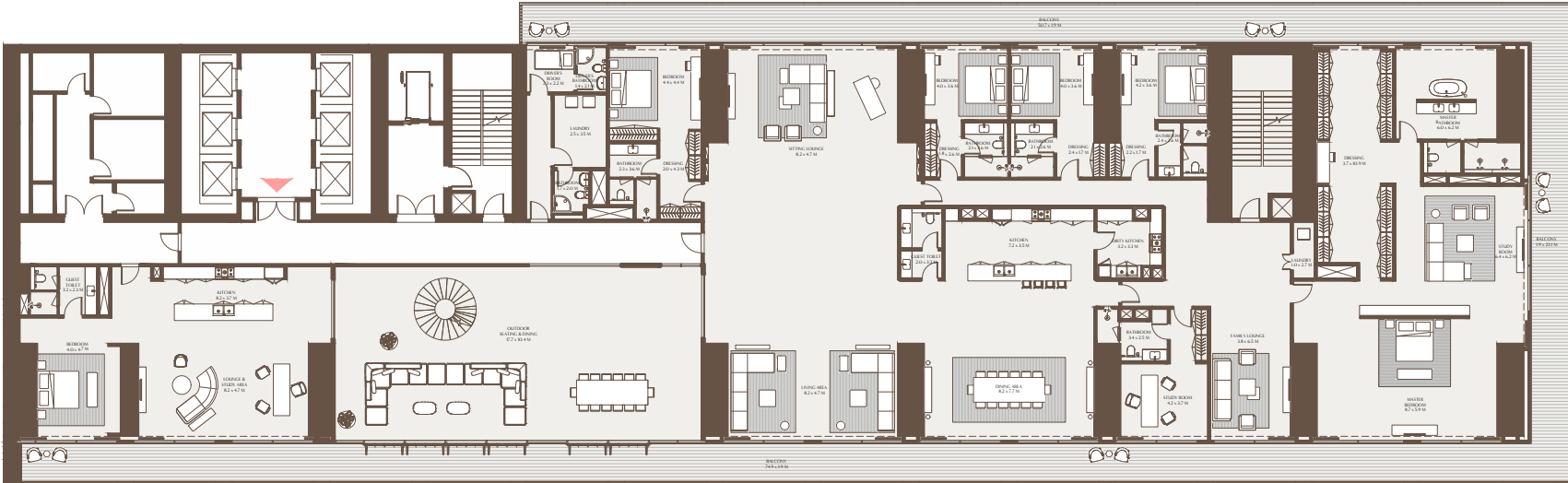
Floating above the city's rhythm, The Observatory is Akala's most iconic residence. A two-storey sanctuary with dual-aspect views toward both Downtown Dubai and DIFC, it embodies a rare architectural synergy between movement and stillness, spectacle and sanctuary. The arrival sequence is intentionally cinematic, beginning at a private lift lobby and unfolding through framed glimpses of skyline vistas, sculptural staircases, and natural light that leads to The Grand Room, a magnificent space where sitting, dining, and living areas converge against a backdrop of dramatic, panoramic views.

Thoughtfully zoned into public and private wings, the residence includes multiple lounge areas, a courtyard framed by folding glass panels, and a light-filled transitional lounge space that serves as a multifunctional family or guest suite. The master bedroom is a sanctuary in its own right, with sweeping three-sided views and deeply personal design details that prioritize peace and introspection.

Above, the rooftop terrace offers a private pool and jacuzzi, art gallery, summer greenhouse, and elevated entertaining zones, all overlooking the Burj Khalifa. As much an architectural landmark as it is a residence, The Observatory allows its residents to experience Dubai from a truly exceptional point of view.

The Observatory - 6 Bedroom Presidential Suite

Unit Area: 928.20 Sqm (9,991.10 Sqft) | Balcony + Roof Terrace: 1,271.06 Sqm (13,681.62 Sqft) | Total Area: 2,199.27 Sqm (23,672.72 Sqft)

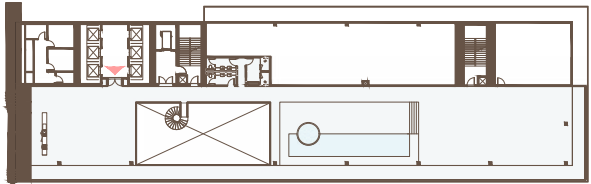
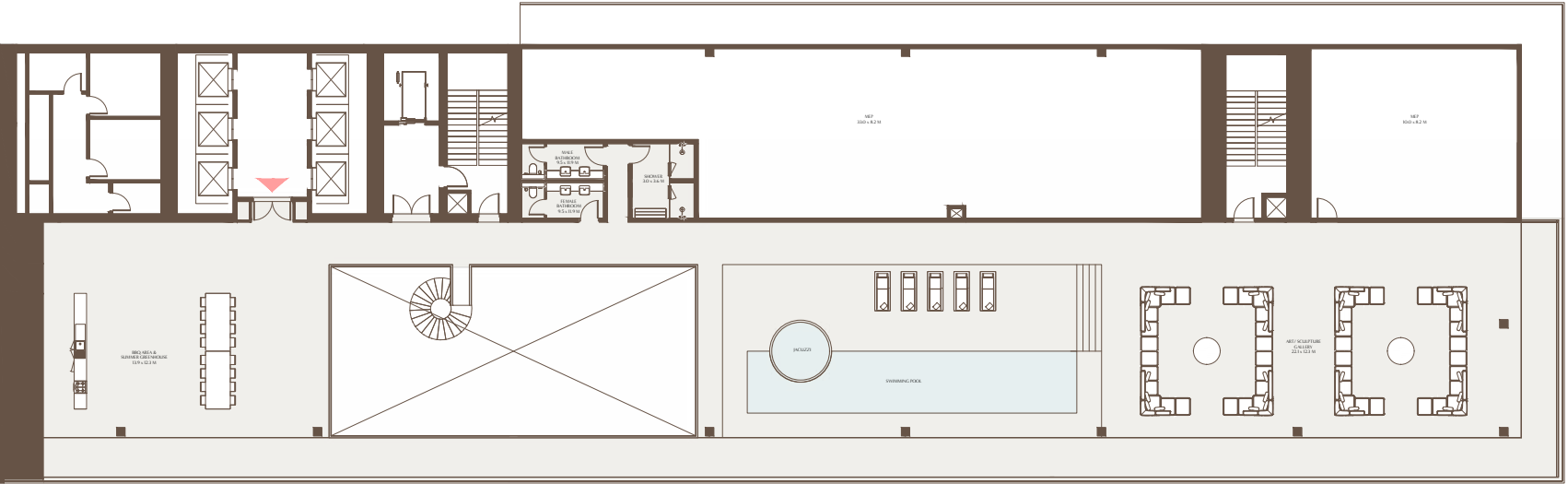


51ST FLOOR



1-Measurements are indicative 'finish to finish' in Metric & Imperial excluding construction tolerance. 2-Plot/unit dimensions may vary from brochure, and unit types/plans may exist as mirrored versions; 3-All images used are for illustrative purposes only. 4-Unless stated otherwise, all fittings and interior decorative items shown are for illustrative purposes only. 5-The developer reserves the right to make alterations, at its absolute discretion, without any liability whatsoever up to the final 'as built' status.

The Observatory - 6 Bedroom Presidential Suite Roof Terrace



ROOF FLOOR



1-Measurements are indicative 'finish to finish' in Metric & Imperial excluding construction tolerance. 2-Plot/unit dimensions may vary from brochure, and unit types/plans may exist as mirrored versions; 3-All images used are for illustrative purposes only. 4-Unless stated otherwise, all fittings and interior decorative items shown are for illustrative purposes only. 5-The developer reserves the right to make alterations, at its absolute discretion, without any liability whatsoever up to the final 'as built' status.

