

AKALA









## THE COLLECTIONS 4 BEDROOM RESIDENCE

Designed for expansive living, The Collections four-bedroom residence offers a layered sense of space with a formal dining area, open-plan living room, and a separate family lounge all with uninterrupted views through floor-to-ceiling glass. Each of the four bedrooms is en-suite with built-in cabinetry, while the master suite includes a walk-in wardrobe and a spa-like bathroom complete with a soaking tub. Balconies extend across the residence, accessed from both bedrooms and living areas, with select corner units offering wraparound balconys and sweeping views in three directions.

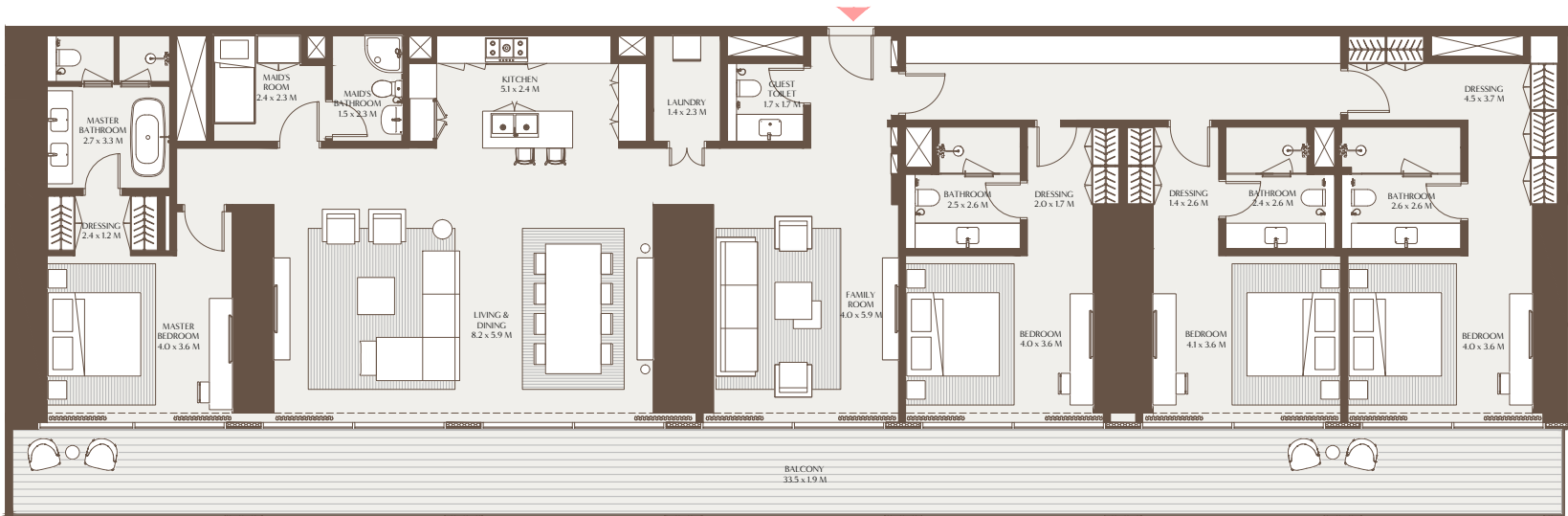
A powder room, maid's quarters with en-suite, laundry area, and an open kitchen with island, alongside a discrete dirty kitchen in select layouts, complete the home's thoughtful functionality.





The Collections - 4 Bedroom Residence A

Unit Area: 275.43 Sqm (2,964.66 Sqft) | Balcony Area: 63.48 Sqm (683.28 Sqft) | Total Area: 338.91 Sqm (3,647.94 Sqft)



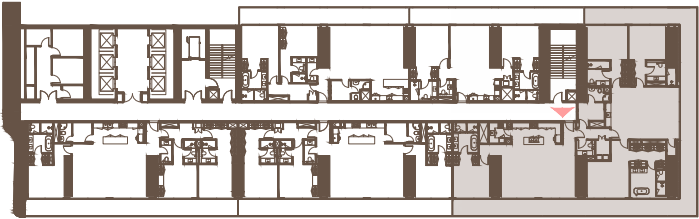
48TH TO 49TH FLOOR



1-Measurements are indicative 'finish to finish' in Metric & Imperial excluding construction tolerance. 2-Plot/unit dimensions may vary from brochure, and unit types/plans may exist as mirrored versions; 3-All images used are for illustrative purposes only. 4-Unless stated otherwise, all fittings and interior decorative items shown are for illustrative purposes only. 5-The developer reserves the right to make alterations, at its absolute discretion, without any liability whatsoever up to the final 'as built' status.

The Collections - 4 Bedroom Residence B

Unit Area: 325.38 Sqm (3,502.35 Sqft) | Balcony Area: 111.06 Sqm (1,195.45 Sqft) | Total Area: 436.44 Sqm (4,697.80 Sqft)



41ST TO 47TH FLOOR



1-Measurements are indicative 'finish to finish' in Metric & Imperial excluding construction tolerance. 2-Plot/unit dimensions may vary from brochure, and unit types/plans may exist as mirrored versions; 3-All images used are for illustrative purposes only. 4-Unless stated otherwise, all fittings and interior decorative items shown are for illustrative purposes only. 5-The developer reserves the right to make alterations, at its absolute discretion, without any liability whatsoever up to the final 'as built' status.