

AKALA



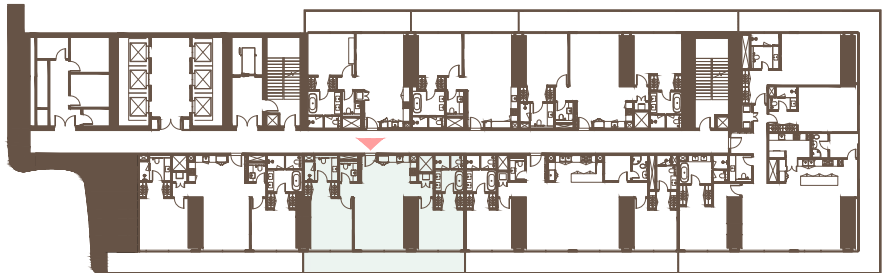
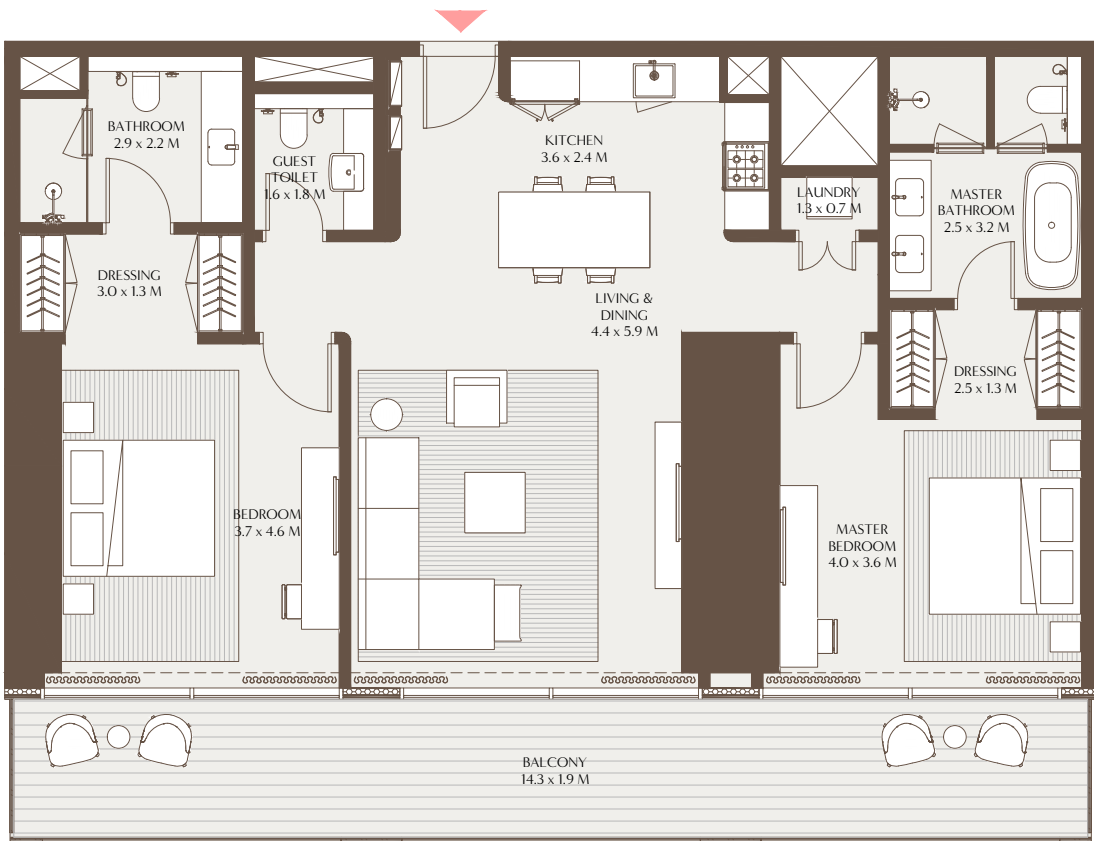
THE ELEMENTS 2 BEDROOM RESIDENCE

Designed to balance openness with privacy, The Elements two bedroom residence welcomes you with immediate views to the outdoors, drawing in natural light and a sense of calm. An open kitchen connects effortlessly to the living and dining spaces, while two en-suite bedrooms offer a quiet escape, each with built-in wardrobes, and the master featuring a walk-in dressing area and spa-style bathroom with a soaking tub. Expansive balconies extend the living space outward, with select layouts offering wraparound balconys and dual-aspect views. Additional features include a powder room, laundry area, and in select typologies, a discreet maid's room with en-suite facilities for added convenience.



The Elements - 2 Bedroom Residence A

Unit Area: 117.75 Sqm (1,267.48 Sqft) | Balcony Area: 26.88 Sqm (289.29 Sqft) | Total Area: 144.63 Sqm (1,556.77 Sqft)



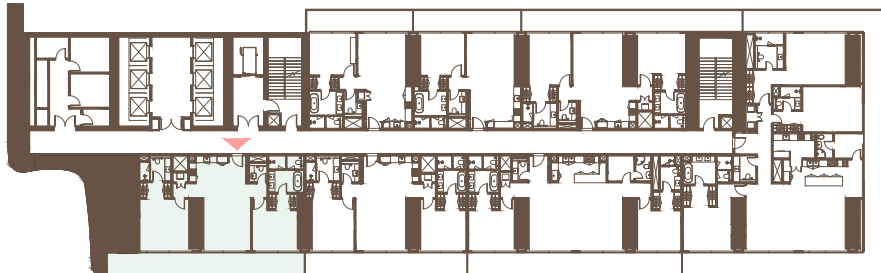
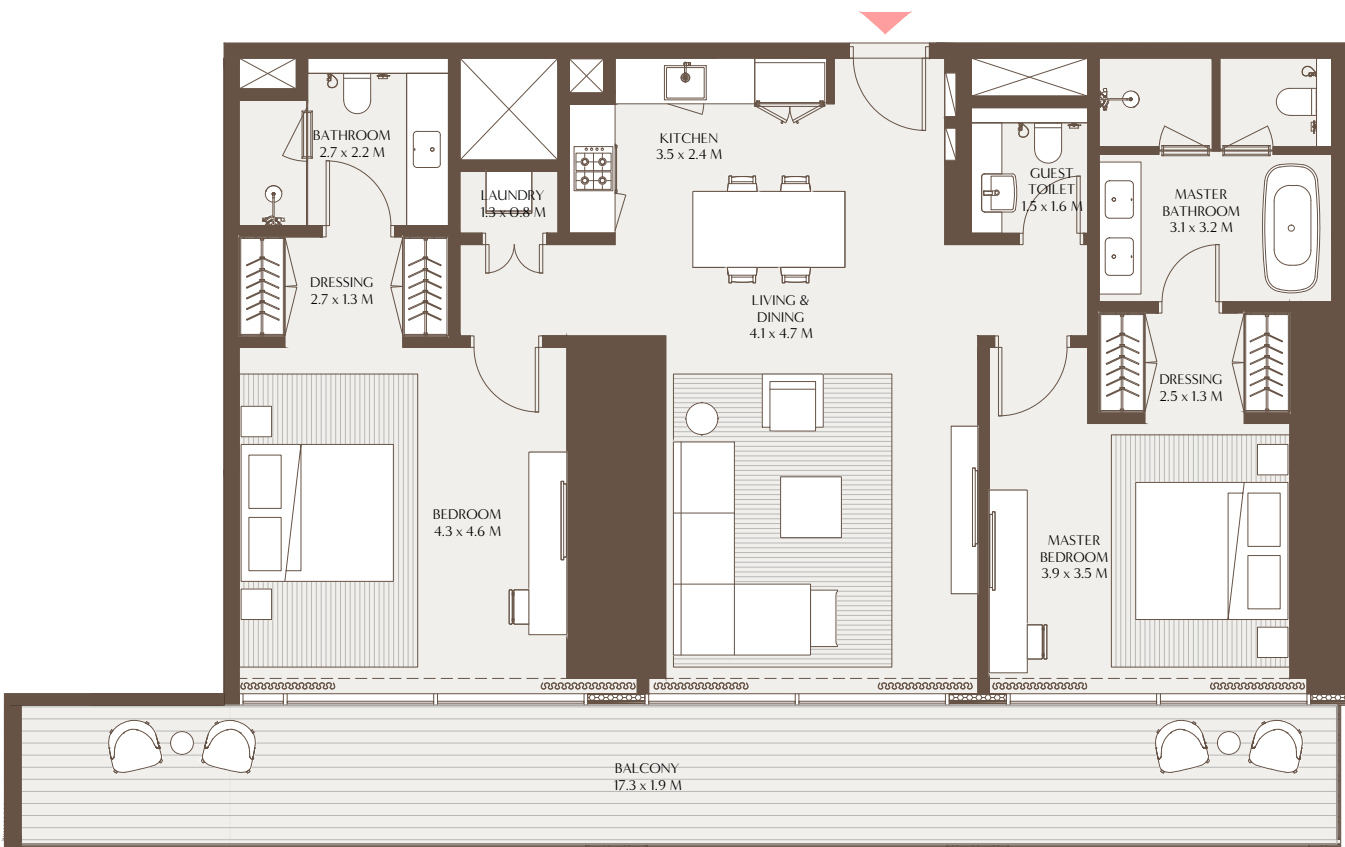
4TH TO 17TH & 19TH TO 29TH FLOOR



1-Measurements are indicative 'finish to finish' in Metric & Imperial excluding construction tolerance. 2-Plot/unit dimensions may vary from brochure, and unit types/plans may exist as mirrored versions; 3-All images used are for illustrative purposes only. 4-Unless stated otherwise, all fittings and interior decorative items shown are for illustrative purposes only. 5-The developer reserves the right to make alterations, at its absolute discretion, without any liability whatsoever up to the final 'as built' status.

The Elements - 2 Bedroom Residence B

Unit Area: 120.39 Sqm (1,295.88 Sqft) | Balcony Area: 32.90 Sqm (354.08 Sqft) | Total Area: 153.29 Sqm (1,649.96 Sqft)



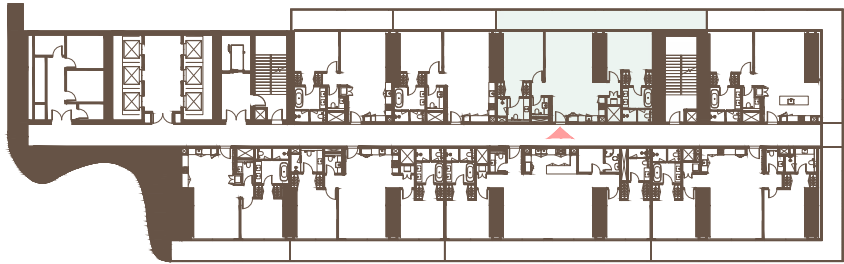
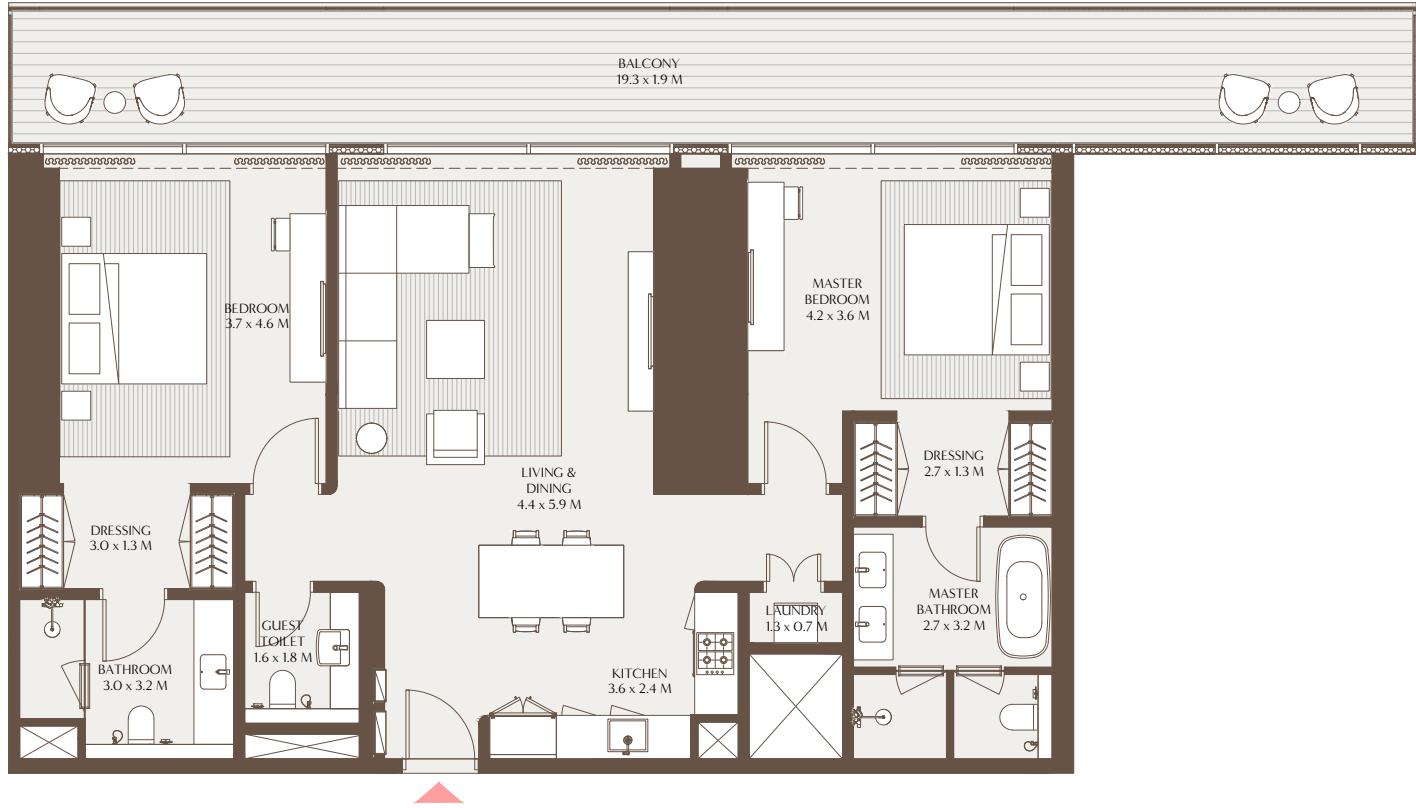
19TH TO 29TH FLOOR



1-Measurements are indicative 'finish to finish' in Metric & Imperial excluding construction tolerance. 2-Plot/unit dimensions may vary from brochure, and unit types/plans may exist as mirrored versions; 3-All images used are for illustrative purposes only. 4-Unless stated otherwise, all fittings and interior decorative items shown are for illustrative purposes only. 5-The developer reserves the right to make alterations, at its absolute discretion, without any liability whatsoever up to the final 'as built' status.

The Elements - 2 Bedroom Residence C

Unit Area: 123.69 Sqm (1,331.41 Sqft) | Balcony Area: 36.55 Sqm (393.39 Sqft) | Total Area: 160.24 Sqm (1,724.80 Sqft)



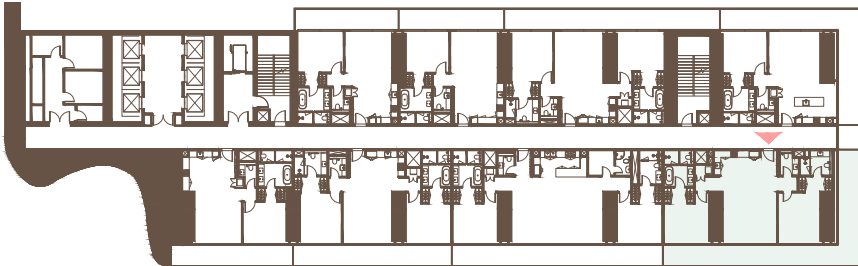
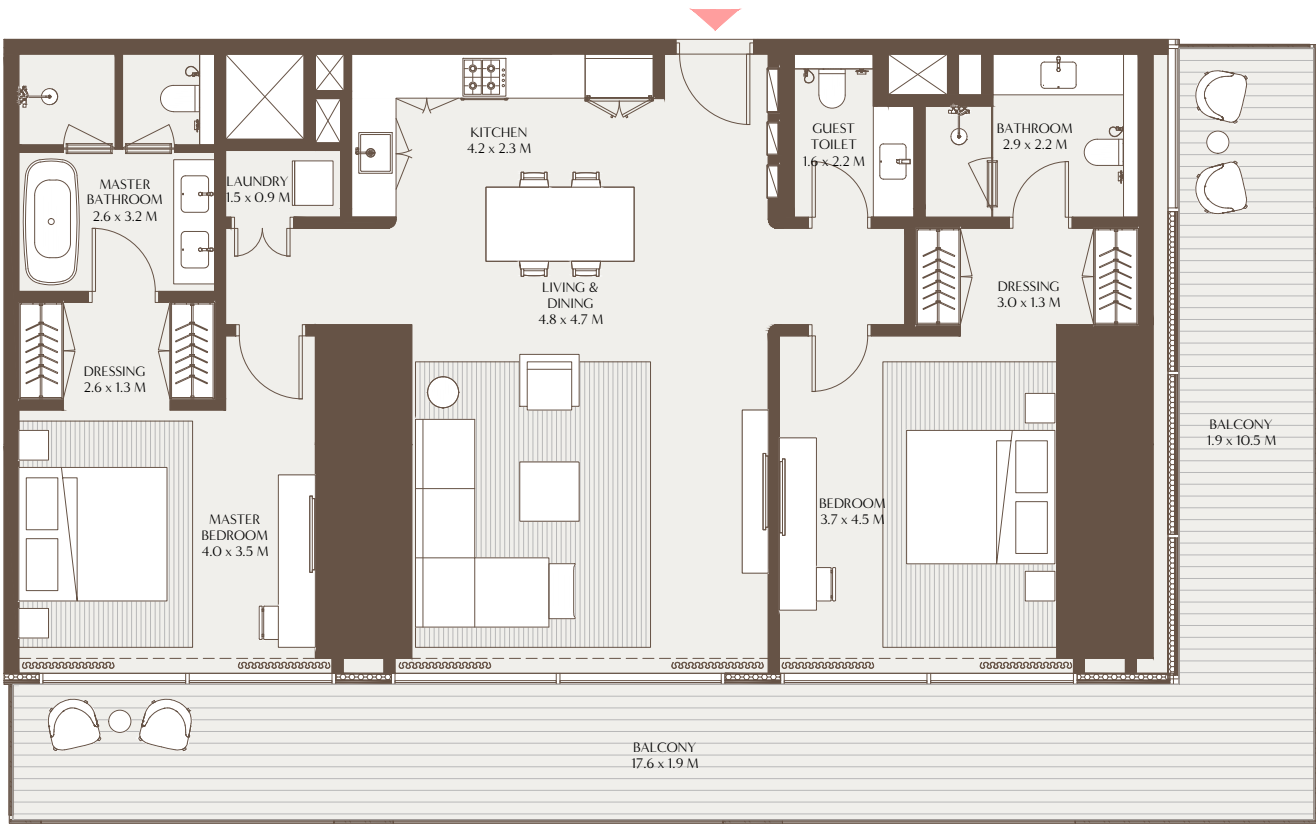
4TH TO 17TH, 19TH TO 29TH, 30TH TO 39TH,
41ST TO 47TH, 48TH TO 49TH FLOOR



1-Measurements are indicative 'finish to finish' in Metric & Imperial excluding construction tolerance. 2-Plot/unit dimensions may vary from brochure, and unit types/plans may exist as mirrored versions; 3-All images used are for illustrative purposes only. 4-Unless stated otherwise, all fittings and interior decorative items shown are for illustrative purposes only. 5-The developer reserves the right to make alterations, at its absolute discretion, without any liability whatsoever up to the final 'as built' status.

The Elements - 2 Bedroom Residence D

Unit Area: 131.90 Sqm (1,419.73 Sqft) | Balcony Area: 49.33 Sqm (531.03 Sqft) | Total Area: 181.23 Sqm (1,950.76 Sqft)



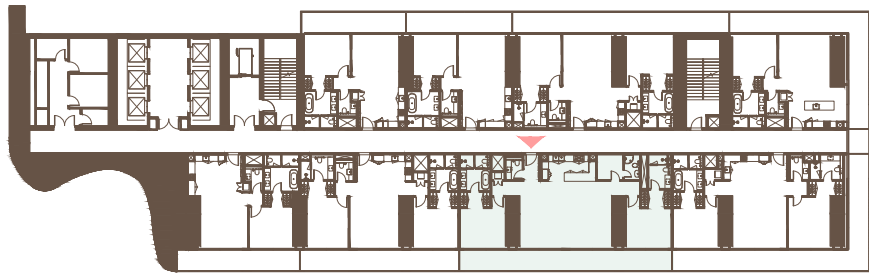
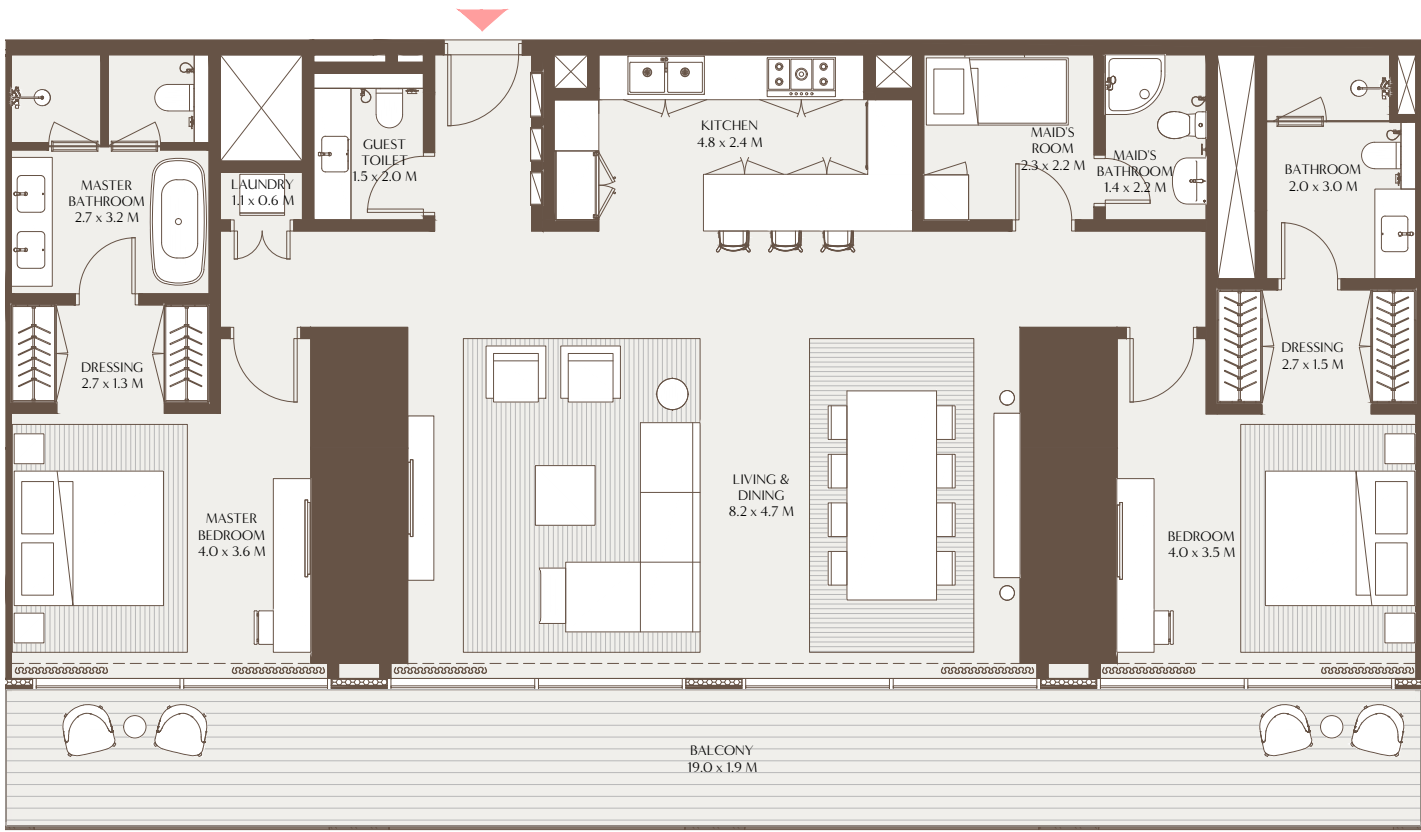
4TH TO 17TH FLOOR



1-Measurements are indicative 'finish to finish' in Metric & Imperial excluding construction tolerance. 2-Plot/unit dimensions may vary from brochure, and unit types/plans may exist as mirrored versions; 3-All images used are for illustrative purposes only. 4-Unless stated otherwise, all fittings and interior decorative items shown are for illustrative purposes only. 5-The developer reserves the right to make alterations, at its absolute discretion, without any liability whatsoever up to the final 'as built' status.

The Elements - 2 Bedroom Residence E

Unit Area: 157.08 Sqm (1,690.80 Sqft) | Balcony Area: 35.83 Sqm (385.67 Sqft) | Total Area: 192.91 Sqm (2,076.47 Sqft)

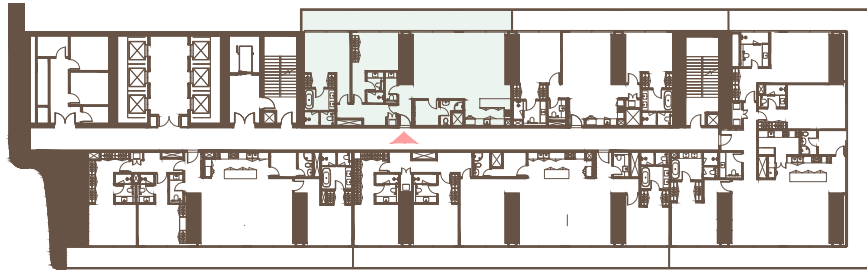
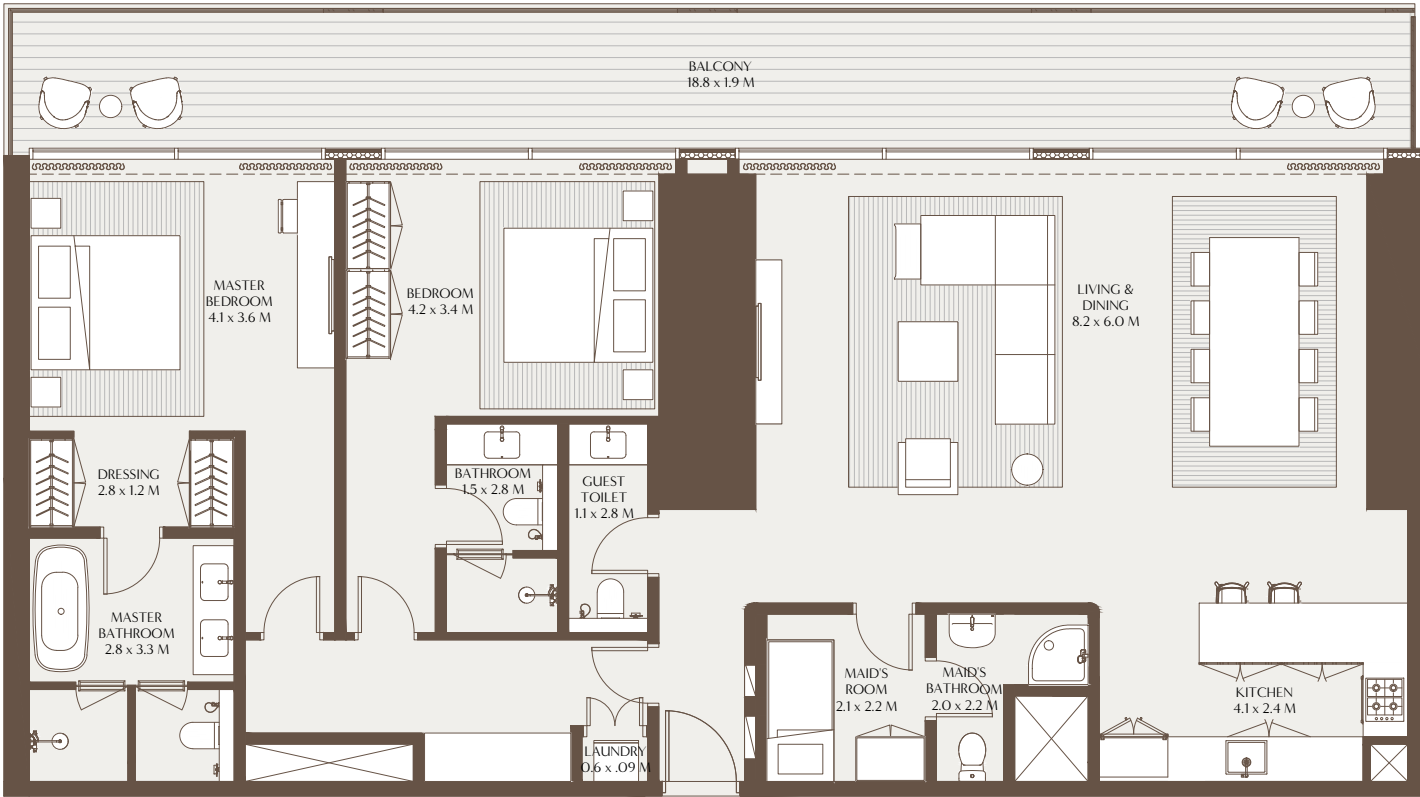


4TH TO 17TH, 19TH TO 29TH FLOOR



The Elements - 2 Bedroom Residence F

Unit Area: 158.52 Sqm (1,706.31 Sqft) | Balcony Area: 35.74 Sqm (384.73 Sqft) | Total Area: 194.26 Sqm (2,091.04 Sqft)



30TH TO 39TH, 41ST TO 47TH, 48TH TO 49TH FLOOR



1-Measurements are indicative 'finish to finish' in Metric & Imperial excluding construction tolerance. 2-Plot/unit dimensions may vary from brochure, and unit types/plans may exist as mirrored versions; 3-All images used are for illustrative purposes only. 4-Unless stated otherwise, all fittings and interior decorative items shown are for illustrative purposes only. 5-The developer reserves the right to make alterations, at its absolute discretion, without any liability whatsoever up to the final 'as built' status.

1-Measurements are indicative 'finish to finish' in Metric & Imperial excluding construction tolerance. 2-Plot/unit dimensions may vary from brochure, and unit types/plans may exist as mirrored versions; 3-All images used are for illustrative purposes only. 4-Unless stated otherwise, all fittings and interior decorative items shown are for illustrative purposes only. 5-The developer reserves the right to make alterations, at its absolute discretion, without any liability whatsoever up to the final 'as built' status.