

AKALA







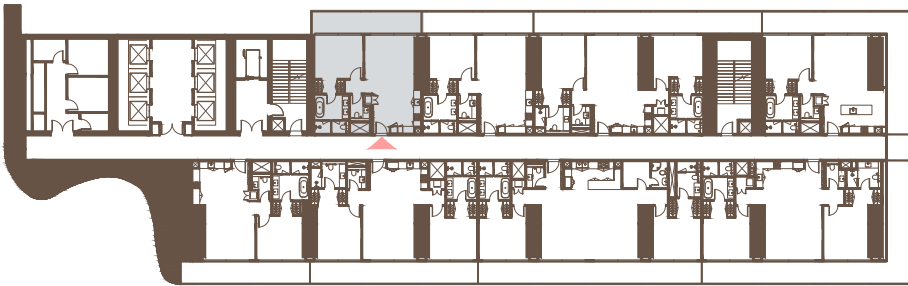
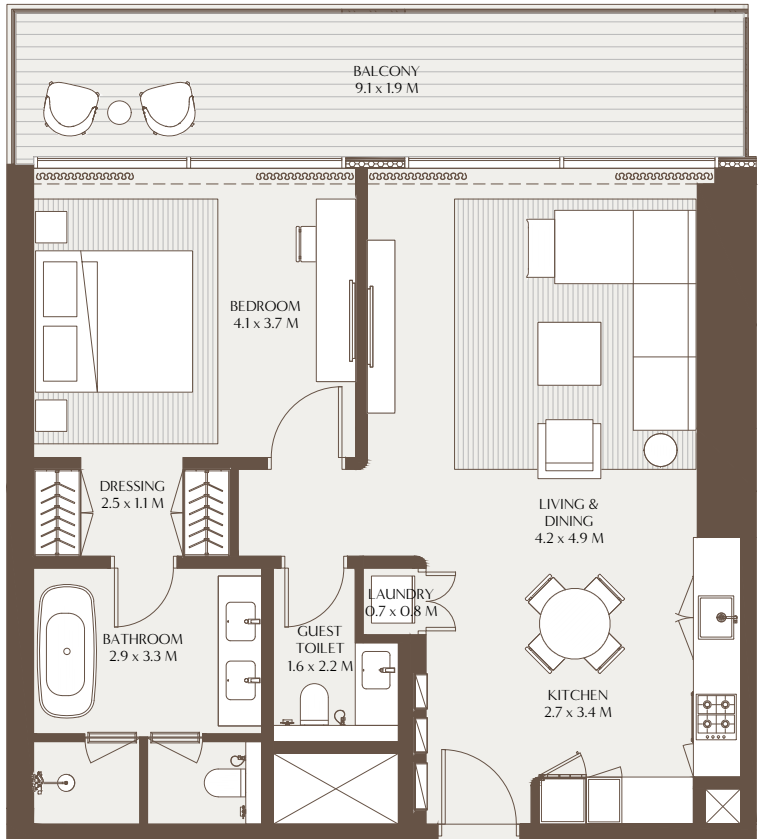
## THE ELEMENTS 1 BEDROOM RESIDENCE

Thoughtfully designed for elevated urban living, The Elements one bedroom residence features an open-plan kitchen seamlessly flowing into the living and dining areas, framed by floor-to-ceiling glass that invites natural light and calming views. The en-suite master bedroom offers a private sanctuary, complete with a spa-like bathroom featuring both a rainfall shower and deep soaking tub. A powder room, dedicated laundry space, and generous wraparound balconies, accessible from both the living area and bedroom, complete this serene and sophisticated retreat.



The Elements - 1 Bedroom Residence A

Unit Area: 78.47 Sqm (844.65 Sqft) | Balcony Area: 17.78 Sqm (191.36 Sqft) | Total Area: 96.25 Sqm (1,036.01 Sqft)

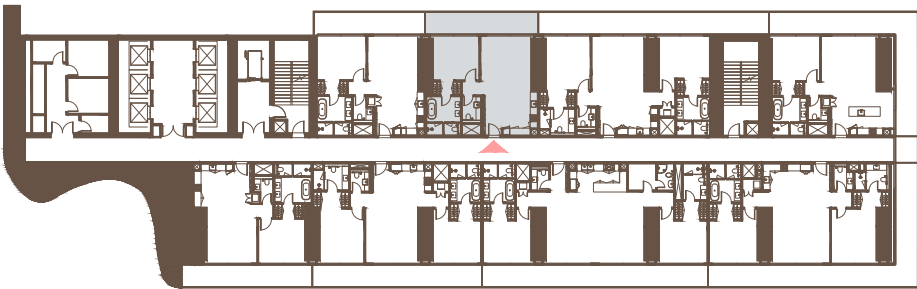
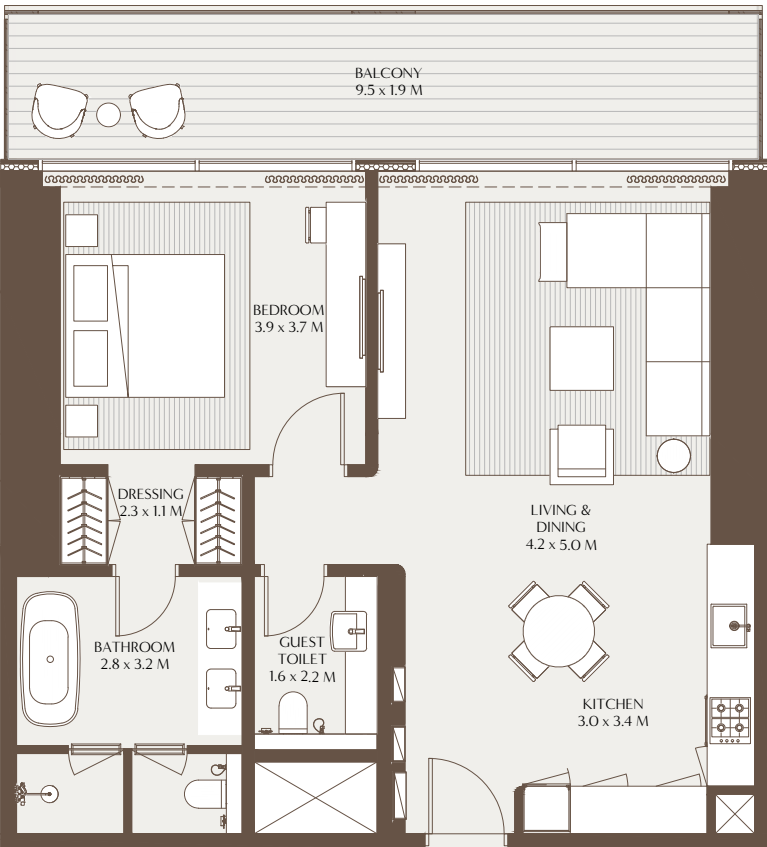


4TH TO 17TH, 19TH TO 29TH FLOOR



The Elements - 1 Bedroom Residence B

Unit Area: 79.08 Sqm (851.21 Sqft) | Balcony Area: 17.92 Sqm (192.89 Sqft) | Total Area: 97.00 Sqm (1,044.10 Sqft)



4TH TO 17TH, 19TH TO 29TH FLOOR

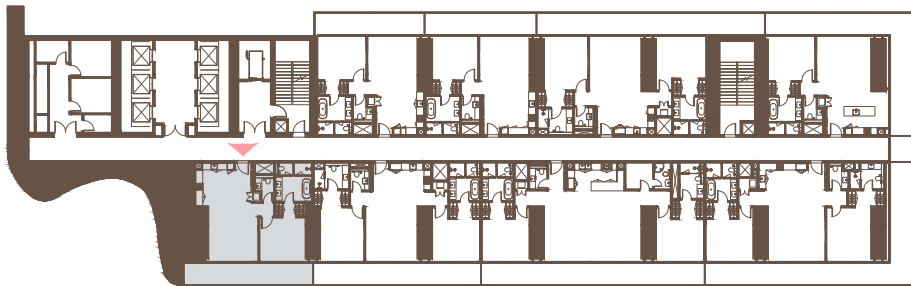
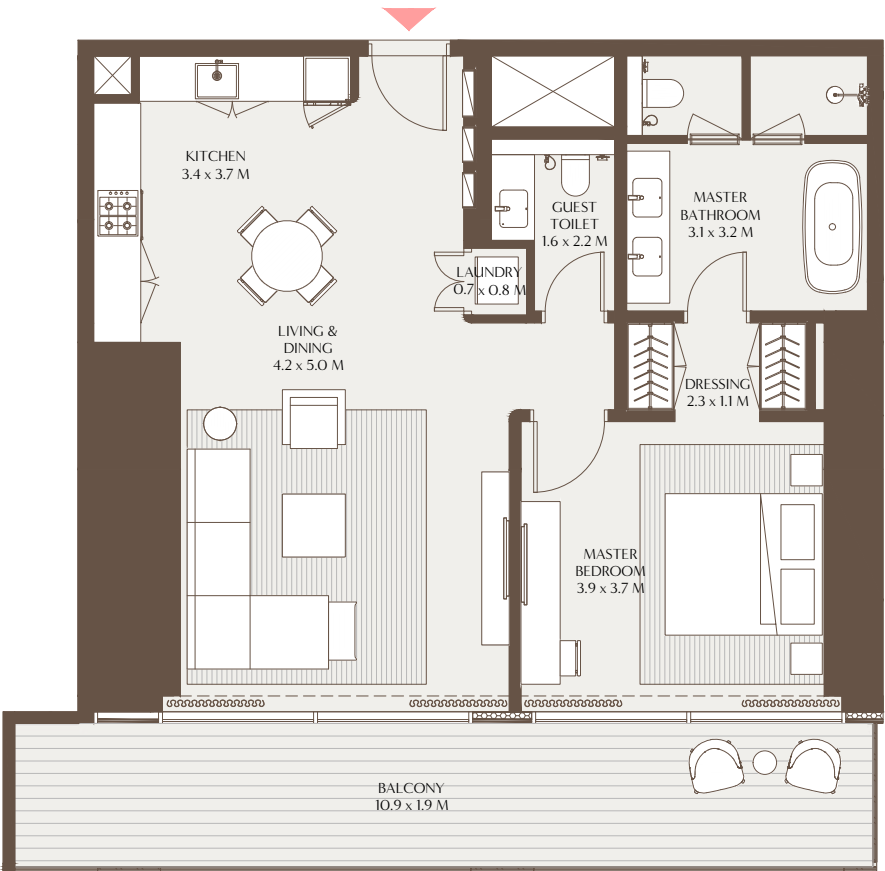


1-Measurements are indicative 'finish to finish' in Metric & Imperial excluding construction tolerance. 2-Plot/unit dimensions may vary from brochure, and unit types/plans may exist as mirrored versions; 3-All images used are for illustrative purposes only. 4-Unless stated otherwise, all fittings and interior decorative items shown are for illustrative purposes only. 5-The developer reserves the right to make alterations, at its absolute discretion, without any liability whatsoever up to the final 'as built' status.

1-Measurements are indicative 'finish to finish' in Metric & Imperial excluding construction tolerance. 2-Plot/unit dimensions may vary from brochure, and unit types/plans may exist as mirrored versions; 3-All images used are for illustrative purposes only. 4-Unless stated otherwise, all fittings and interior decorative items shown are for illustrative purposes only. 5-The developer reserves the right to make alterations, at its absolute discretion, without any liability whatsoever up to the final 'as built' status.

The Elements - 1 Bedroom Residence C

Unit Area: 80.82 Sqm (869.94 Sqft) | Balcony Area: 31.01 Sqm (333.79 Sqft) | Total Area: 111.83 Sqm (1,203.73 Sqft)

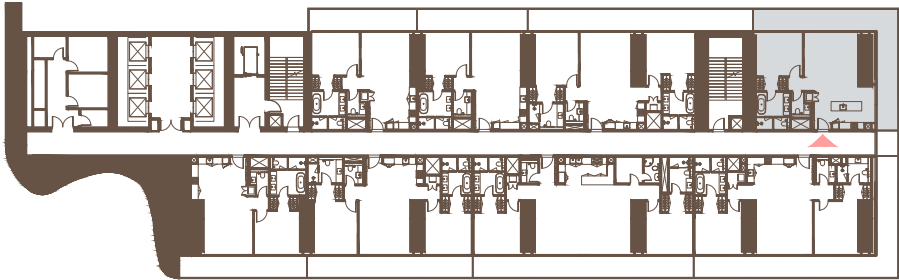
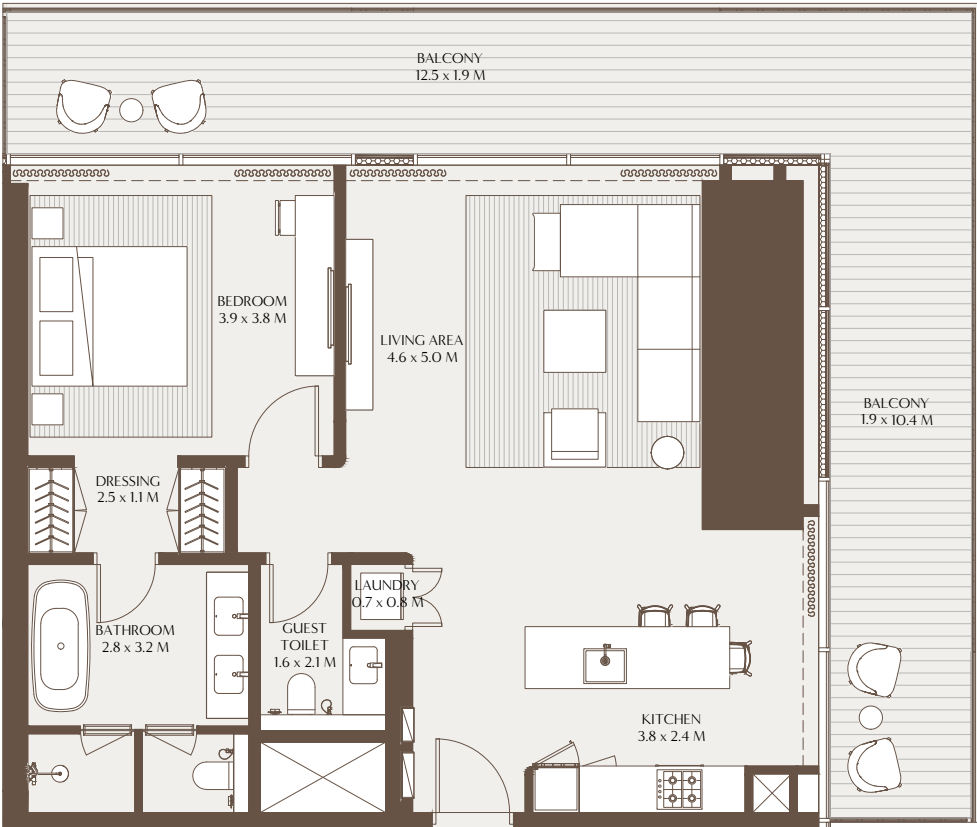


4TH TO 17TH FLOOR



The Elements - 1 Bedroom Residence D

Unit Area: 91.01 Sqm (979.62 Sqft) | Balcony Area: 39.68 Sqm (427.11 Sqft) | Total Area: 130.69 Sqm (1,406.73 Sqft)



4TH TO 17TH FLOOR



1-Measurements are indicative 'finish to finish' in Metric & Imperial excluding construction tolerance. 2-Plot/unit dimensions may vary from brochure, and unit types/plans may exist as mirrored versions; 3-All images used are for illustrative purposes only. 4-Unless stated otherwise, all fittings and interior decorative items shown are for illustrative purposes only. 5-The developer reserves the right to make alterations, at its absolute discretion, without any liability whatsoever up to the final 'as built' status.

1-Measurements are indicative 'finish to finish' in Metric & Imperial excluding construction tolerance. 2-Plot/unit dimensions may vary from brochure, and unit types/plans may exist as mirrored versions; 3-All images used are for illustrative purposes only. 4-Unless stated otherwise, all fittings and interior decorative items shown are for illustrative purposes only. 5-The developer reserves the right to make alterations, at its absolute discretion, without any liability whatsoever up to the final 'as built' status.